

Specifications

Sentry is a wall-mounted* instrument that tests the integrity and records the measured resistance values of ESD grounding wrist straps and foot straps or footwear.

Operator identification is entered via a numeric keypad, swipe card or other data entry device. All measurements are made in one pass and Sentry logs the resistance value or values along with the operator ID, date and time. The measured results are compared with programmable test parameters and Pass/Fail indicated and logged.

Stored data can be manually or automatically downloaded via RS232 or Network connection, delivered to a database for later analysis by OBSERVER Software or exported to any common spreadsheet.

*A frame mounted free-standing version is available.

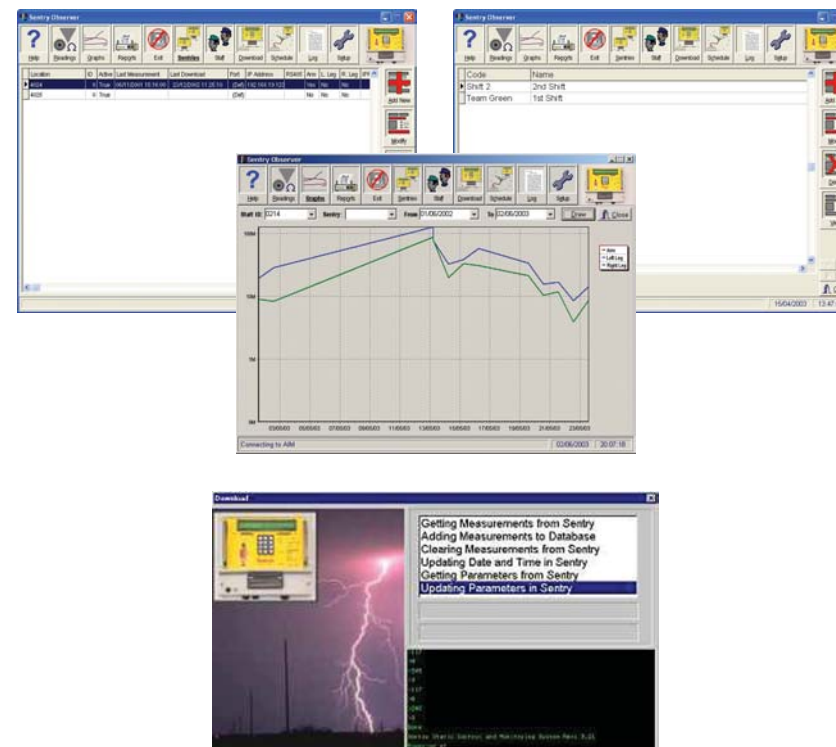
Power Supply:	12V DC 500mA regulated power supply (external)
Comm Port Settings:	RS232 @ 19200 Baude
Data Storage:	At least 3600 records using 3 character ID's
Operator ID Code:	Up to 8 numeric characters held in non volatile memory
Voltage Free Relay Contacts	
Rated at:	50V DC @ 500mA maximum
Normally Open:	Close on Pass
Normally Open:	Close on Fail
Measurement Accuracy:	Worst case $\pm 10\%$ between 0.5M and 100M
Dimensions:	255mm x 215mm x 160mm (W x H x D)
Weight:	1.55Kg excluding power supply (PSU approximately 0.5Kg)

Your Local **Sentry** Distributor:



Sentry at a glance

- Verifies wrist and foot strap integrity
- On duty 24 hours/day 365 days/year
- Logs individual results with time and date and operator ID
- Measured resistance values available for trend analysis and fault prediction
- Paperless system cuts administration costs
- Automatic audit trail allows ISO9000 compliance
- Easy to use by staff and visitors
- Expandable for small to large organisations
- Easy to use software enables results to be tabulated and analysed
- Networking facility
- Programmable limits
- Complies with BS IEC 61340



Sentry



Static Control & Monitoring System

More than just a tester, Sentry is a powerful measurement system with built-in data-logging to allow easy compliance with ISO9000.



Sentry

Sentry Observer Software

Key Features & Benefits

Static Control Monitoring System

- **Sentry** is a new concept in the avoidance of component damage and protection from electrostatic discharge (ESD)
- **Sentry** provides an efficient method to verify all personnel entering static sensitive areas
- **Sentry** replaces inefficient, expensive paper based systems that offer limited checking



- **Windows Software (Running under Windows 95/98, 2000, XP or NT):** The main screen is always visible when running, showing the toolbar with icons and function buttons
- **Communicates with SENTRY** via Ethernet, Token Ring, RS232 or RS485 for networked, permanent PC connection or stand-alone operation
- **Help:** On screen Help from a menu, or context sensitive Help via the "F1" key in subjects
- **Readings:** View stored readings from any or all Sentries, for any or all staff, selectable date range and select Results to Show e.g. All Measurements or Fails/Passes Only
- **Staff:** Display, Modify or Create staff names and ID's. Also a Notes field for additional information. Staff can be grouped as teams or shifts for reports or display and tests configured for individual operators
- **Import:** Import staff lists from a comma-delimited file
- **Check Usage:** Check who did or did not make a measurement on any particular day
- **Reports & Graphs:** Prints the stored readings as customised reports or graphs
- **Peek:** Watch any activity in real time on a selected Sentry - even across a network
- **Export:** Manual, or Automatic Export of readings to an ASCII (comma-delimited file)
- **Download:** Manual, or Automatic Download at pre-selected times to a PC
- **Set-up:** Allows global system parameters to be selected and set
- **Sentries:** Display or Modify all Sentry Units known to the system and their configuration
- **Verify:** Confirm the measurement accuracy of the Sentry Unit
- **Backup, Restore and Delete** old measurements

Sentry is a wall-mounted unit that verifies wrist and foot grounding devices in a single operation. The unit automatically logs the measured values together with the time and date against a unique personnel identifier. Users can choose from keypad, swipe card or bar code reader.

- **Efficient** - Does not rely on hand written entries
- **Quick to use** - Saves valuable production time
- **Comprehensive** - Checks every entrant
- **Easy to use** - Suitable for all staff and visitors
- **Accurate** - Measures precise values
- **Effective** - Improves quality and reduces product failure
- **Valuable** - Provides an automatic audit trail for easy compliance with ISO9000
- **Stand-alone** - Can operate with or without a permanent PC connection
- **Voltage Free Contacts** - For access control on Pass or Fail
- **Communications** - Via Ethernet or RS232 for networked permanent connection to a PC or stand-alone operation

OPTIONS

- Barcode Reader (Swipe card)
- Single or Double Foot Plate
- Battery Backup for continued use during mains failure